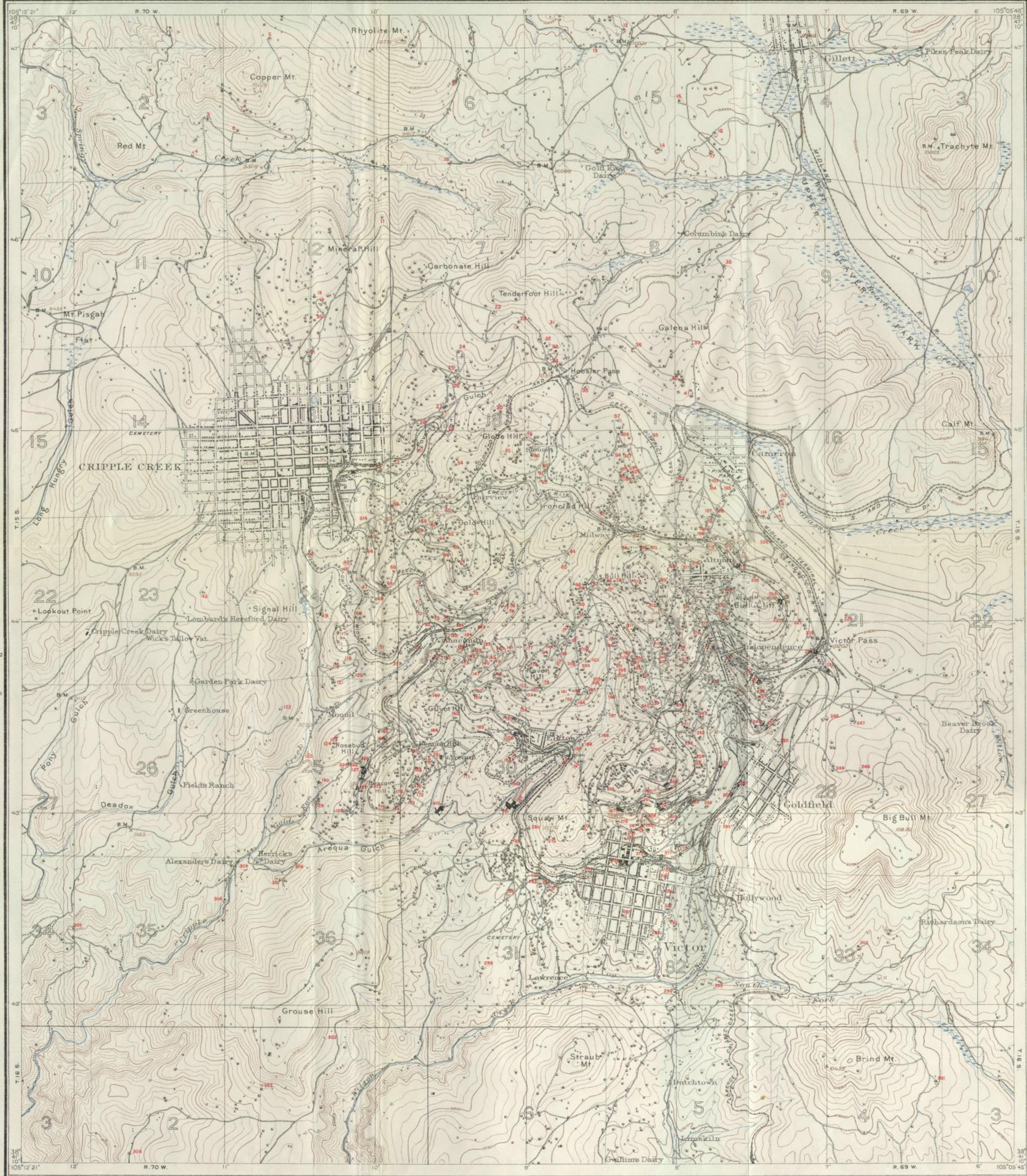


MINE NAMES AND NUMBERS

- 1 Metallic tunnel
- 2 Galena tunnel
- 3 York tunnel
- 4 Grand Review
- 5 Nickel Plate
- 6 Ida May
- 7 Fluorine
- 8 Standard
- 9 Greulichmacher tunnel
- 10 May Bell
- 11 Waze
- 12 Lincoln
- 13 Hawkay
- 14 Billar
- 15 Cuckoo
- 16 Asteo
- 17 Bondholder
- 18 Laura Lee
- 19 Adie C.
- 20 Sunflower
- 21 Roanoke
- 22 Tenderfoot Canal
- 23 Bonanza King No. 2
- 24 Black Diamond
- 25 Queen Bee
- 26 Nellie Kathleen
- 27 Gold King
- 28 Reno
- 29 C. O. D.
- 30 May-be-so
- 31 Bob Lee
- 32 Friday
- 33 Hoosier
- 34 Newark
- 35 Jeanette
- 36 Pride of C. C. No. 2
- 37 Junebug
- 38 Leon
- 39 Sunshine
- 40 Dorothy
- 41 Queen Ann
- 42 Marjosa
- 43 Goodwill tunnel
- 44 Alpha tunnel
- 45 Red Spruce
- 46 Foster
- 47 Ophelia tunnel
- 48 World's Fair
- 49 Chicago tunnel
- 50 Abe Lincoln
- 51 Lily
- 52 Gold Pass
- 53 Globe
- 54 Moon Anchor
- 55 Midget
- 56 City View
- 57 Progress-Gold King
- 58 Half Moon
- 59 Anchor-Leland
- 60 Volcano
- 61 Lexington
- 62 International
- 63 E. Porter Gold King
- 64 Rittenhouse
- 65 Crone Greenwood
- 66 Union Bell
- 67 Mint
- 68 Alamo
- 69 Superior
- 70 Fauntleroy
- 71 Virginia M.
- 72 Howard
- 73 Work No. 4
- 74 Dolly Varden
- 75 Mountain Monarch
- 76 North Star
- 77 Plymouth Rock No. 2
- 78 Deerhorn
- 79 Inreclad
- 80 Plymouth Rock No. 1
- 81 South Park
- 82 New York tunnel
- 83 Josephine tunnel
- 84 Anna May Wells
- 85 Manda
- 86 Bogart
- 87 Sheriff
- 88 Maria A.
- 89 Tula Jones
- 90 Anacosta
- 91 Nabob
- 92 Arapahoe
- 93 Jerry Johnson
- 94 Damon
- 95 Londonderry
- 96 Gleason
- 97 Wild Horse
- 98 Kalamazoo
- 99 Eagle
- 100 New Century
- 101 Elmore
- 102 Flying Cloud
- 103 Mitchell
- 104 Thomas
- 105 Blane
- 106 Acacia
- 107 Comet
- 108 Buena Vista
- 109 Lila
- 110 Black 10
- 111 Black 9
- 112 Black 8
- 113 Black 7
- 114 Morning Star
- 115 Gold Bend
- 116 Peg Leg
- 117 Sweet, or El Rino
- 118 Caladonia
- 119 Cardinal
- 120 Cumberland
- 121 Dead Shot
- 122 Mary Nevia
- 123 National tunnel
- 124 C. K. & N.
- 125 Pass
- 126 Rocky Mt.
- 127 Standard tunnel
- 128 Banner
- 129 Shannon
- 130 Ann
- 131 Work No. 10
- 132 Work No. 11
- 133 Work No. 11
- 134 Mary McKinney
- 135 Advance No. 2
- 136 Morning Glory
- 137 Jackpot
- 138 Doctor
- 139 Ingham
- 140 Work No. 5
- 141 Nugget
- 142 Work No. 6
- 143 Advance
- 144 Golden Wedge
- 145 Elizabeth Casper
- 146 Jennie Sample
- 147 Katinka
- 148 Wedge
- 149 Copt
- 150 Turnade
- 151 Upper Raven tunnel
- 152 Lower Raven tunnel
- 153 Boatwick
- 154 Elkton
- 155 Thompson
- 156 Kitty Lane
- 157 Ross and Hurd tunnel
- 158 Economic Mill
- 159 Snow Mt.
- 160 3 H.
- 161 Alice
- 162 Dan McDonald
- 163 Little Bear
- 164 Maid of Orleans
- 165 Agnes
- 166 St. Thomas
- 167 Savage
- 168 Mabel M.
- 169 Little Nell
- 170 Zee
- 171 Gold Dollar
- 172 Prince Albert
- 173 Beacon
- 174 Black Bell
- 175 Jack C.
- 176 Gregory
- 177 Snowy Range
- 178 Wide Awake
- 179 Cranks
- 180 Custer
- 181 Lizzie S.
- 182 Bonnie Nell
- 183 Moose
- 184 Cresson
- 185 Trail tunnel
- 186 Comanche Plume tunnel
- 187 Uinta tunnel
- 188 Orpha tunnel
- 189 Edgip
- 190 Carbonate Queen
- 191 Brigadier
- 192 Ida May
- 193 Joe Dandy
- 194 Red Umbrella
- 195 Ratler
- 196 Maggie
- 197 Jackson Shaft
- 198 Gold Sovereign tunnel
- 199 Draper
- 200 Ben Harrison tunnel
- 201 Mary L.
- 202 Bertha B.
- 203 Little Frank
- 204 Elsie R.
- 205 Mary Ann
- 206 Sadie Ben. 2
- 207 Blue Bird
- 208 Lucky Gus No. 1
- 209 Lafayette
- 210 Mountain Beauty
- 211 Lucky Gus No. 2
- 212 Orpha May
- 213 Findley
- 214 Atlantic
- 215 Deadwood No. 2
- 216 Pearl
- 217 Trachyte
- 218 Shurtliff No. 2
- 219 Deadwood No. 1
- 220 Venture
- 221 Victor
- 222 Smuggler
- 223 Little Daisy
- 224 Little May
- 225 Baby Mine
- 226 Easter Bell
- 227 Bull Hill Sampler
- 228 T. and B. Sampler
- 229 Vindicator No. 2
- 230 Vindicator No. 1
- 231 Lillie
- 232 Longfellow
- 233 Christmas
- 234 La Bella
- 235 Last Dollar
- 236 Los Angeles
- 237 Colorado City
- 238 Modoc No. 2
- 239 Florence
- 240 Clyde
- 241 Golden Cycle
- 242 Theresa
- 243 Homestead
- 244 Little Caddy
- 245 Besis
- 246 Salty
- 247 Gold Knob
- 248 Star
- 249 Rigi No. 1
- 250 Rigi No. 2
- 251 Modoc No. 1
- 252 Portland No. 3
- 253 Eagle Sampler
- 254 National Sampler
- 255 Van Fleet Sampler
- 256 Portland No. 2
- 257 Lowell
- 258 Granite
- 259 Portland No. 1
- 260 T. and B. Sampler
- 261 Chesapeake
- 262 Straton's Independence No. 2
- 263 Monument
- 264 Stonehouse
- 265 Dillon
- 266 Par Yahn
- 267 Straton's Independence No. 1
- 268 Strong
- 269 Mary Cashen
- 270 Dead Pine
- 271 Oliver
- 272 Ajax
- 273 Cortolatus
- 274 Nellie V.
- 275 Mohican
- 276 Green
- 277 May B.
- 278 Alhambra
- 279 Santa Rita
- 280 Nevada King
- 281 Climax
- 282 Crone
- 283 Forepaugh
- 284 Colomda
- 285 Gold Coin
- 286 Jolly Tar
- 287 Jefferson
- 288 Conio
- 289 Fortuna
- 290 Joly Jane
- 291 Mattie W.
- 292 Surey
- 293 Trinidad
- 294 Gold Queen
- 295 St. Patrick
- 296 Bonzal
- 297 King Solomon's Placer
- 298 Alliance
- 299 Hawkays
- 300 Teal tunnel
- 301 Likely
- 302 Margold
- 303 Cowley
- 304 Old Gold and Globe mill
- 305 Hildebrand
- 306 Newell tunnel
- 307 El Paso drainage tunnel
- 308 Arequa mill
- 309 John A. Logan
- 310 American Eagle
- 311 Hannah Britt
- 312 Conadrum
- 313 Empire State
- 314 Pinto
- 315 Burns
- 316 Pharmacist
- 317 Zenobia
- 318 Little May
- 319 Hull City placer
- 320 Anacosta-Raven tunnel
- 321 Kentucky Belle
- 322 Old Gold
- 323 W. P. H.
- 324 Little Pedro
- 325 Forest Queen
- 326 Pride of Cripple Creek
- 327 Vogeliman
- 328 Dexter
- 329 Hamona
- 330 Harry Adney
- 331 Trilby
- 332 Le Claire
- 333 Dante
- 334 Whisper
- 335 Blue Bell tunnel



- LEGEND**
- Shaft
 - Prospect
 - Mine tunnel
 - Mine dump
 - Triangulation station
 - B.M. Bench mark
 - Roads and buildings

Henry Gannett, Chief Topographer
 Topography by W. B. Corse, T. M. Bannon and E. M. Douglas
 Triangulation by E. M. Douglas
 Surveyed in 1884
 Revised in 1902-1903 by R. T. Evans
 E. M. Douglas, Geographer in charge

TOPOGRAPHIC MAP OF THE CRIPPLE CREEK DISTRICT, COLORADO

Scale 25000

0 1 2 3 4 5 miles

0 1 2 3 4 kilometers

Contour interval 50 feet

JULIUS BIEN & CO. LITH. N. Y.